

TRAFFIC REGULATION ORDER

DATED 12 February 2015

**THE BOROUGH OF TEST VALLEY (VARIOUS ROADS, TOWN CENTRE,
ANDOVER) (ONE WAY TRAFFIC, PARKING PLACES, DISABLED PARKING
PLACES AND PROHIBITION OF WAITING) ORDER 2015**

W. Lynds,
Head of Legal & Democratic Service
Test Valley Borough Council
Beech Hurst, Weyhill Road
Andover, Hampshire SP10 3AJ

Ref: JB TRO (70)

TEST VALLEY BOROUGH COUNCIL

ROAD TRAFFIC REGULATION ACT 1984

THE BOROUGH OF TEST VALLEY (VARIOUS ROADS, TOWN CENTRE, ANDOVER) (ONE WAY TRAFFIC, PARKING PLACES, DISABLED PARKING PLACES AND PROHIBITION OF WAITING) ORDER 2015

The Borough Council of Test Valley as agent of Hampshire County Council (being the Traffic Authority) in exercise of its powers under Sections 1, 2, 3, 4, 32, 45, 46, 49, 51 and 53 of the Road Traffic Regulation Act 1984 ("the Act") as amended by the Road Traffic Regulation (Parking) Act, 1986, Part IV of Schedule 9 to the Act, and of all other enabling powers, and after consultation with the Chief Officer of Police in accordance with Part III of Schedule 9 to the Act, hereby makes the following order:-

PART 1 – GENERAL

1. In this order

"the Council" means Hampshire County Council or, as the case may be, The Borough Council of Test Valley acting as Hampshire County Council's agents.

"Disabled person's vehicle" has the same meaning as in the Local Authorities' Traffic Orders (Exemptions for Disabled Persons) (England) Regulations 2000.

"Disabled person's badge" has the same meaning as in the Disabled Persons (Badges for Motor Vehicles) Regulations 2000.

"Parking Disc" means a disc, issued by a Local Authority, 125 millimetres square, coloured orange or blue and capable of showing the quarter hour period during which a period of waiting begins.

"Driver" in relation to a vehicle waiting in a parking place, means the person driving the vehicle at the time it was left in the parking place.

"Parking Place" means any part of a road authorised by this order to be used as a parking place.

2. Regulation 4 of the Local Authorities Traffic Orders (Exemptions for Disabled Persons) (England) Regulations 2000 has effect for the purpose of defining the expression "relevant position" in this order.
3. The prohibitions and restrictions imposed by this order shall be in addition to and not in derogation from any restriction or requirement

imposed by any regulations made or having effect as if made under the Act or by or under any other enactment.

PART II – AUTHORISATION AND USE OF PARKING PLACES

4.
 - (i) Each of the parts of a road specified in schedule I to this order is authorised to be used subject to the following provisions of this order as a parking place for such classes of vehicles, on such days and during such hours as are specified in relation to that part of the road in the said schedule.
 - (ii) Nothing in paragraph (i) of this article shall restrict the power of the Council to close any parking place.
5. Where in schedule I to this order a parking place is described as available for vehicles of a specified class, the driver of the vehicle shall not permit it to wait in that parking place:-
 - (a) unless it is of the specified class or a disabled person's vehicle which displays in the relevant position a disabled person's badge issued by any local authority; and
 - (b) unless it is positioned within the parking areas defined by white lines on the surface of the road and the distance between the edge of the carriageway and the nearest wheel of the vehicle is not more than twelve inches; and
 - (c) for longer than the maximum period permitted for waiting specified in relation to that parking place.
 - (d) When a vehicle has left a parking place after waiting thereon the driver thereof shall not within the period specified in relation to that parking place after its leaving permit it to wait again upon that parking place.
6. A driver of a vehicle shall not use a parking place:-
 - (a) so as unreasonably to prevent access to any premises adjoining the road, or the use of the road by other persons, or so as to be a nuisance;
 - (b) when the Council has closed that parking place.
7. The driver of a motor vehicle using a parking place shall stop the engine as soon as the vehicle is in position in the parking place, and shall not start the engine except when about to change the position of the vehicle in or to depart from the parking place.

8. No person shall use a vehicle, while it is in a parking place, in connection with the sale of any article to persons in or near the parking place or in connection with the selling or offering for hire of his skill or services.
9. Subject to the proviso hereto, when a vehicle is left in a parking place in contravention of any of the provisions contained in article 4, article 5 or article 6 of this order a person authorised in that behalf by the Council may remove the vehicle or arrange for it to be removed from that parking place; provided that when a vehicle is waiting in a parking place in contravention of the provision of article 5(b) of this order, a person authorised in that behalf by the Council may alter or cause to be altered the position of the vehicle in order that its position shall comply with that provision.
10. Any person removing a vehicle or altering its position by virtue of the last preceding article of this order may do so by towing or driving the vehicle or in such other manner as he may think necessary and may take such measures in relation to the vehicle as he may think necessary to enable him to remove it or alter its position, as the case may be.
11. When a person authorised by the Council removes or makes arrangements for the removal of a vehicle from a parking place by virtue of article 10 of this order, he shall make such arrangements as may be reasonably necessary for the safe custody of the vehicle.

PART III –RESTRICTION OF WAITING

12. Save as provided in articles 13 and 14 of this order, no person shall, except upon the direction or with the permission of a police constable in uniform or civil enforcement officer, cause or permit any vehicle to wait, load or unload at any time on the sides of road specified in Schedule 2 to this order
13. Nothing in article 12 of this order shall render it unlawful to cause or permit any vehicle to wait on any of the sides of road referred to in that article for so long as may be necessary:-
 - (a) to enable a person to board or alight from the vehicle;
 - (b) to enable the vehicle, if it cannot conveniently be used for such purpose in any other road or parking place, to be used in connection with the following operations namely:-
 - (i) the removal of any obstruction to traffic;
 - (ii) the maintenance, improvement or reconstruction of the said road or sides of road;

- (iii) the laying, erection, alteration or repair in, or in land adjacent to, the said roads or sides of road, of any sewer or of any main, pipe or apparatus for the supply of gas, water or electricity or telecommunications;
- (c) to enable the vehicle, if it cannot conveniently be used for such purpose in any other road or parking place, to be used in the service of a local authority or a water authority in pursuance of statutory powers or duties;
- (d) to enable the vehicle to be used in the service of the Post Office for the purpose of delivering or collecting postal packets as defined in the Postal Services Act 2000;
- (e) to enable the vehicle to take in petrol, oil, water or air; or
- (f) to enable the vehicle to be used for fire and rescue service, ambulance or police purposes.

PART IV – ONE WAY TRAFFIC EXCEPT CYCLES

14. No person shall, except upon the direction or with the permission of a police officer in uniform, cause any vehicle except cycles to proceed in the lengths of roads specified in the first and third columns of Schedule 3 of this order otherwise than in the direction specified opposite to that length of road in the second column of Schedule 3

PART V – REVOCATIONS

15. The Traffic Regulation Orders the titles of which are set out in Column 2 of Schedule 4 to this Order are hereby revoked to the extent set out in Column 1 of Schedule 4 to this Order.
16. This order shall come into operation on the 1st March 2015 and may be cited as "The Borough of Test Valley (Various Roads, Town Centre, Andover) (One Way Traffic, Parking Places, Disabled Parking Places and Prohibition of Waiting) Order 2015"

GIVEN this

12th

day of

February

2015

SCHEDULES

Schedule 1 Part 1 – Location and Duration of Parking Places				
1	2	3	4	5
Situation of Parking Place	Class of Vehicle	Days of operation of parking place	Hours of operation of parking place	Maximum period for which vehicles may wait
That length on the east side of High Street from a point 19m north of its junction with Newbury Street to a point 10 metres further north, for a width of 2.5metres measured west of the granite set line. That length on the west side of High Street from its junction with Newbury Street to a point 9 metres south thereof, for a width of 2.5m east of the kerb.	Any vehicle including vehicles displaying a disabled person's badge	All days	Midnight to 8.00am and 6.00pm to midnight	30 minutes, no return within 2 hours.
		All days	8.00am to 6.00pm	No Waiting
That length on the north side of Chantry Street between 8 metres and 14 metres west of the centre line of Marlborough Street and off	Any vehicle including vehicles displaying a disabled person's badge	All days	All times	30 minutes, no return within 2 hours

set 2.5 metres at its eastern end and off set 2 metres at its western end from the adjacent building numbers 2 and 4 Chantry Street for a width throughout of 2 metres.				
Those areas of road specified in column 1 of part 2 of this schedule as shown coloured pink and square hatched on the attached plan or plans specified in relation to that road in column 2 thereof to a width throughout of 1.8 metres measured at right angles from the edge of carriageway	Motor cars, Motor cycles and invalid carriages as defined in Section 136 of the Act	(a) Monday to Saturday	(i) Midnight to 9am and 6pm to Midnight	No limit
			(ii) 9am to 6pm	30 minutes (return prohibited within 2 hours)
		(b) Sunday	All hours	No limit
Those areas of road specified in column 1 of part 2 of this schedule as shown coloured green and horizontally dashed on the	Motor cars, Motor cycles and invalid carriages as defined in Section 136 of the Act	(a) Monday to Saturday	(i) Midnight to 9am and 6pm to Midnight	No limit
			(ii) 9am to 6pm	15 minutes (return prohibited within 1 hour)
		(b) Sunday	All hours	No limit

attached plan or plans specified in relation to that road in column 2 thereof to a width throughout of 1.8 metres measured at right angles from the edge of carriageway				
---	--	--	--	--

Schedule 1	
Part 2	
Roads at Andover in the Borough of Test Valley	Drawings nos. of plans attached to this order map ref. below
East Street	AF48 Revision 1
Eastfield Road	AF48 Revision 1

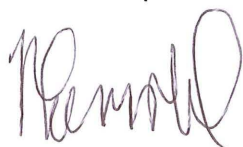
Schedule 2 – No Waiting and No Loading at Any Time		
Road	Side	Length
Newbury Street	Both	Whole length.
High Street	West	From its junction with Newbury Street to its junction with Chantry Street/Marlborough Street.
High Street	East	From a point 9 metres south of its junction with Newbury Street to a point 19 metres north of its junction with Newbury Street.
High Street	East	From a point 31 metres north of its junction with Newbury Street to the centre line of its junction with Marlborough Street
Chantry Street	South	From its junction with High Street to its junction with West Street
Chantry Street	North	From the centre line of Marlborough Street at its junction with Chantry Street for a distance of 8 metres to the West.
Chantry Street	North	From a point 14metres west of the centre line of Marlborough Street to its junction with West Street

Schedule 3		
One Way Direction except cycles		
Road Name	Direction	Length of Road
Newbury Street	West	From its junction with Church Close to its junction with High Street.
High Street	North	From its junction with Newbury Street to its junction with Chantry Street
Chantry Street	West	From its junction with High Street to its junction with The Chantry Centre Service Yard Access

Schedule 4

Extent to be Revoked (Column 1)	Title of Order (Column 2)
Insofar as it relates to Chantry Street, Newbury Street and Upper High Street, Andover	Test Valley Borough Council (Various Roads, Andover) (Prohibition and Restriction of Waiting) (No. 2) Order 1977
Insofar as it relates to Chantry Street and Newbury Street, Andover	The Borough of Test Valley (High Street, Chantry Street, Marlborough Street and Newbury Street, Andover) (One-Way Traffic) Order 1987
Insofar as it relates to the disabled parking place and prohibition of waiting in High Street, Andover	The Borough of Test Valley (Andover Town Centre Bus and Disabled Parking Places and Prohibition of Waiting) Order 2010
Insofar as it relates to parking places in East Street and Eastfield Road, Andover	The Borough of Test Valley (St Mary's Ward, Andover) (Parking Places, Prohibition of Driving and Prohibition of Waiting) (Controlled Zone) Consolidation Order 2014

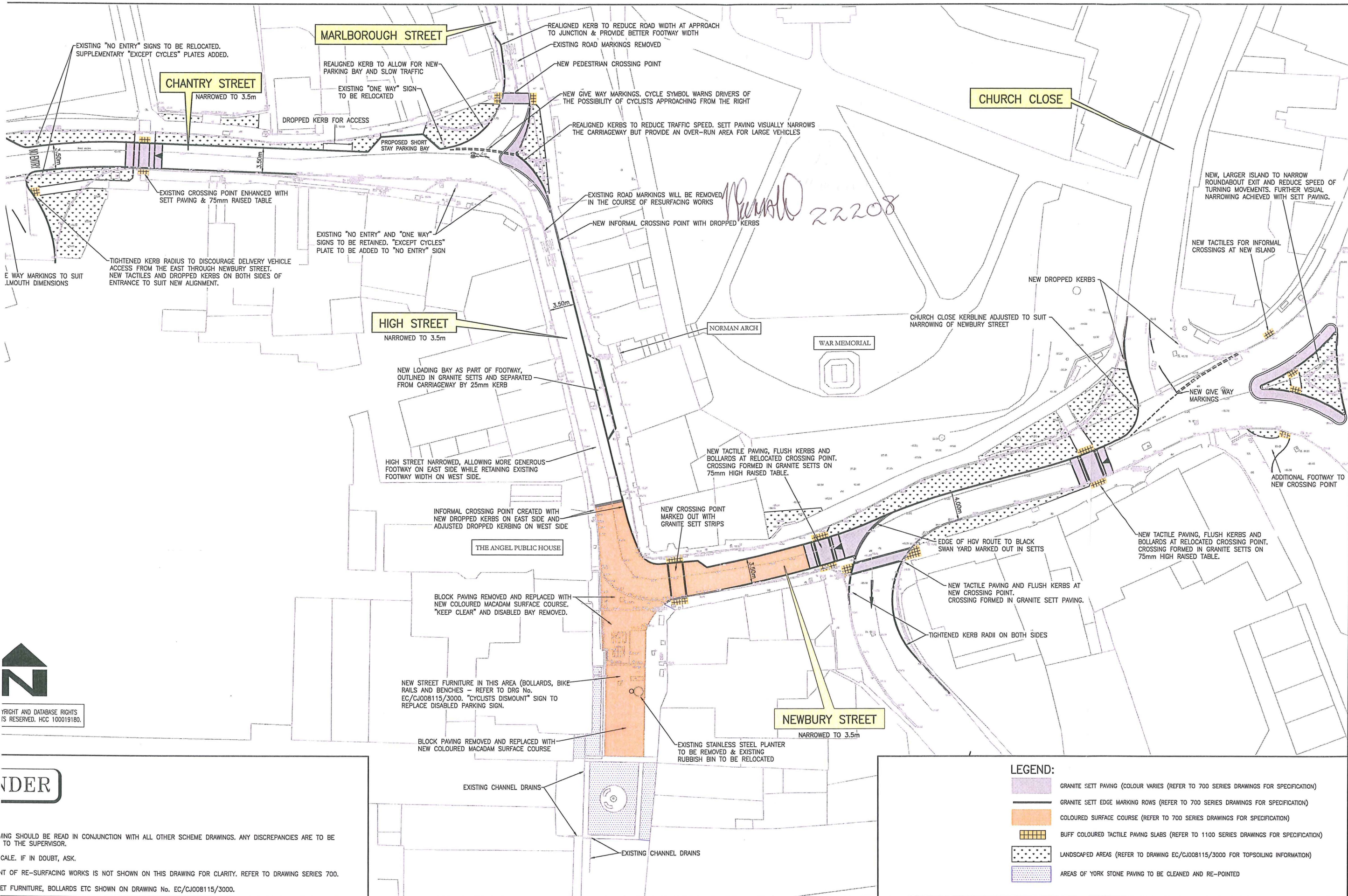
THE COMMON SEAL of THE BOROUGH)
COUNCIL of TEST VALLEY was hereunto)
Affixed in the presence of:-)



Authorised Officer Signatory



22208



RIGHT AND DATABASE RIGHTS
IS RESERVED. HCC 100019180.

NDER

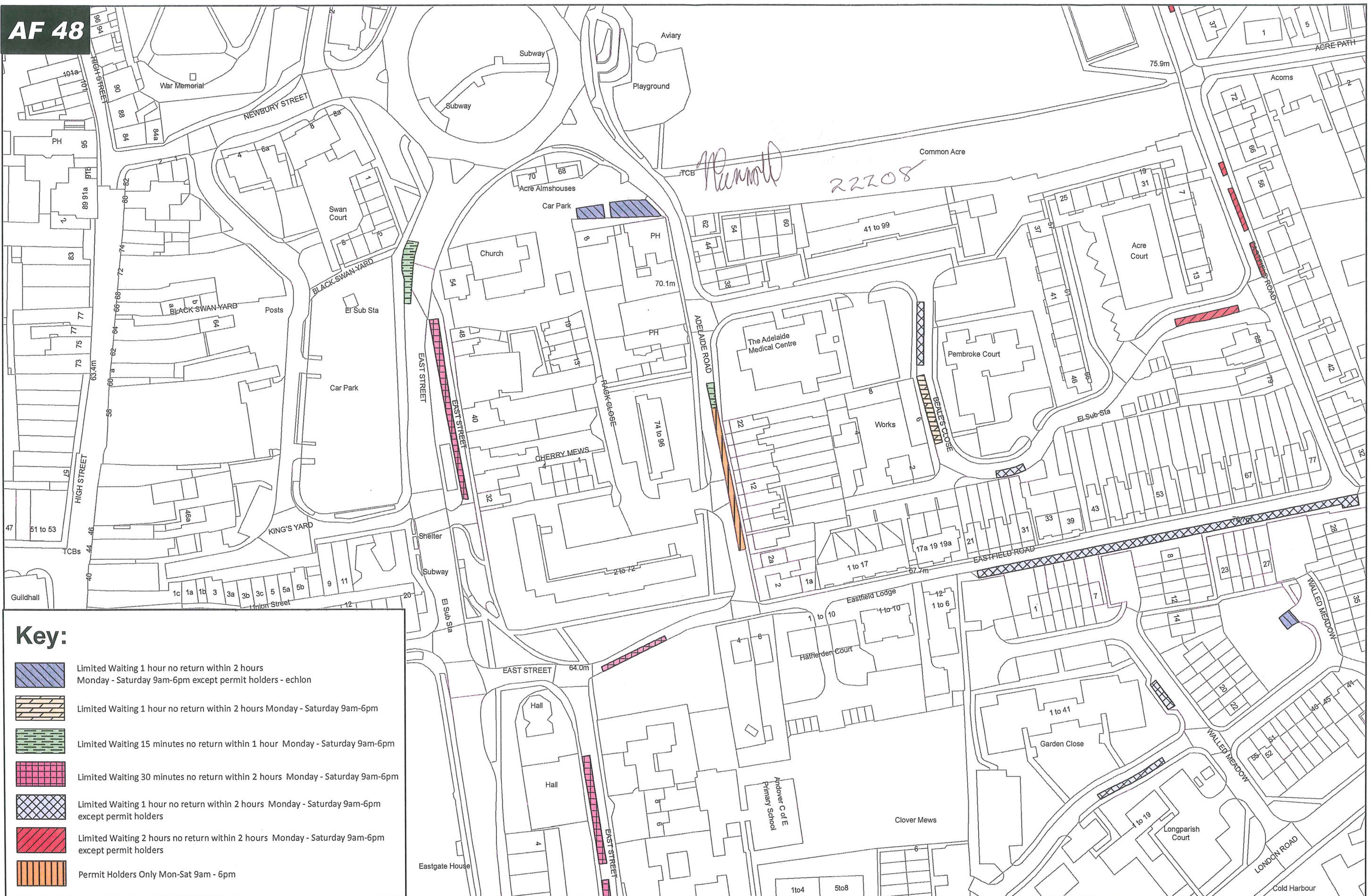
ING SHOULD BE READ IN CONJUNCTION WITH ALL OTHER SCHEME DRAWINGS. ANY DISCREPANCIES ARE TO BE TO THE SUPERVISOR.
CALE. IF IN DOUBT, ASK.
IT OF RE-SURFACING WORKS IS NOT SHOWN ON THIS DRAWING FOR CLARITY. REFER TO DRAWING SERIES 700.
ET FURNITURE, BOLLARDS ETC SHOWN ON DRAWING No. EC/CJ008115/3000.

LEGEND:



- GRANITE SETT PAVING (COLOUR VARIES (REFER TO 700 SERIES DRAWINGS FOR SPECIFICATION))
- GRANITE SETT EDGE MARKING ROWS (REFER TO 700 SERIES DRAWINGS FOR SPECIFICATION)
- COLOURED SURFACE COURSE (REFER TO 700 SERIES DRAWINGS FOR SPECIFICATION)
- BUFF COLOURED TACTILE PAVING SLABS (REFER TO 1100 SERIES DRAWINGS FOR SPECIFICATION)
- LANDSCAPED AREAS (REFER TO DRAWING EC/CJ008115/3000 FOR TOPSOILING INFORMATION)
- AREAS OF YORK STONE PAVING TO BE CLEANED AND RE-POINTED

AMENDMENT				DATE				DRAWN				CHKD				APPD			
HAMPSHIRE COUNTY COUNCIL ECONOMY, TRANSPORT & ENVIRONMENT STRATEGIC TRANSPORT				CONSULTANT				DRAWN				SCHEME				DRAWING TITLE			
 STUART JARVIS BSc DipTP FCIHT MRTP: DIRECTOR OF ECONOMY, TRANSPORT & ENVIRONMENT				WHW WHW MC MC DR DR				ANDOVER TOWN CENTRE ACCESSIBILITY IMPROVEMENTS NEWBURY ST/HIGH ST/CHANTRY ST				SCHEME GENERAL ARRANGEMENT				JOB No. CJ008115.01 SCALE 1:250 DATE March 2014			
								HCC CAD: 30.Sep.2014 at 1:58pm DRG No. EC/CJ008115/102				REV TO							

hcc: k:\eng\roads\schemes\cj008115 and RJ507989 Andover Town Accessibility\AutoCAD\Contract Drawings\EC-CJ008115-102 General Arrangement.dwg



Key:

-  Limited Waiting 1 hour no return within 2 hours
Monday - Saturday 9am-6pm except permit holders - echlon
-  Limited Waiting 1 hour no return within 2 hours Monday - Saturday 9am-6pm
-  Limited Waiting 15 minutes no return within 1 hour Monday - Saturday 9am-6pm
-  Limited Waiting 30 minutes no return within 2 hours Monday - Saturday 9am-6pm
-  Limited Waiting 1 hour no return within 2 hours Monday - Saturday 9am-6pm except permit holders
-  Limited Waiting 2 hours no return within 2 hours Monday - Saturday 9am-6pm except permit holders
-  Permit Holders Only Mon-Sat 9am - 6pm



Scheme

St Mary's Ward Parking Places Order

Date: November 2014
Scale: 1:1250 @ A3
Drawing No. AF 48
Revision: Rev 1

THIS PLOT IS REPRODUCED FROM ORDNANCE SURVEY MATERIAL WITH THE PERMISSION OF ORDNANCE SURVEY ON BEHALF OF THE CONTROLLER OF HER MAJESTY'S STATIONARY OFFICE @ CROWN COPYRIGHT. UNAUTHORISED REPRODUCTION INFRINGES CROWN COPYRIGHT AND MAY LEAD TO PROSECUTION OR CIVIL PROCEEDINGS. TEST VALLEY BOROUGH COUNCIL LICENCE No. 100006096 2013

